



GPS Dog Fence Collar

» Training Guide
V20230329

Watch the tutorial videos at:
<https://help.skyshepherd.com>



Read the entire Operating Manual before using your SkyShepherd device. Read this entire Training Guide and the Quick-Start Guide before training with SkyShepherd. These documents, along with the instructional videos at the <https://help.skyshepherd.com>, constitute the SkyShepherd product literature.

It is important to follow all instructions in the SkyShepherd product literature.

SkyShepherd Product Warnings and Disclaimers

- ! Use of SkyShepherd does not guarantee your dog will remain within the boundaries you create. SkyShepherd should NOT be used with dogs known or suspected of aggressive behavior.
- ! SkyShepherd may not show you the GPS location of your dog if your collar cannot reach the SkyShepherd charging cradle/gateway. The range for connectivity between the collar and the cradle/gateway depends on terrain interference, but could be up to ½ mile, under excellent conditions.
- ! Keep your device away from fire and do not leave it unattended in high-temperature locations (over 140°F), under direct sunlight, or in a hot vehicle.
- ! SkyShepherd may not provide a reliable signal indoors or across streams, creeks, or other bodies of water. SkyShepherd is for outdoor use only.
- ! SkyShepherd is not intended for use on less than 1 acre of land or on any plot of land not wide enough to provide effective alert zones for your pet.

Overview

SkyShepherd is a new tool that combines innovative technology with positive training techniques to communicate safe boundaries to your dog. It won't replace you as your dog's trainer, but it will reinforce the training you've done already.

NOTE. Do not start training your dog with SkyShepherd until you have achieved a basic level of obedience training together. Your dog should know and obey the commands Here (Come), Sit, and Stay both on leash and off leash before you introduce SkyShepherd to your dog.

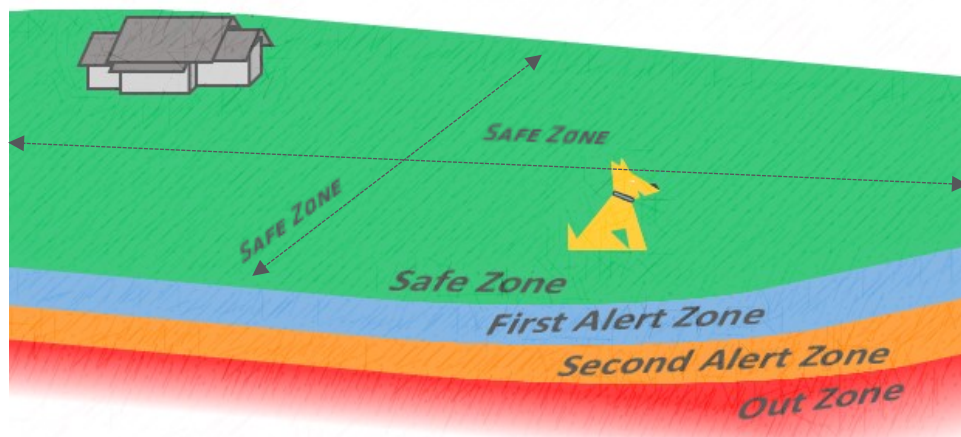
NOTE: Your dog should be at least 20 lbs. and six months of age before starting training.

CAUTION. Always remove SkyShepherd from your dog before allowing it indoors. SkyShepherd is for outdoor use only.

Training begins with you, the owner. After setting up your first boundary (see the Help Center, Quick-Start Guide, or the Operating Manual), walk the perimeter with SkyShepherd in your hand. Explore all the zones in the boundary to gain a sense of what your dog will experience during training. When you train your dog, the process is similar: you will allow your dog to experience the different feedback zones associated with the boundary and then guide it back to Safe Zone.

Feedback Zones

SkyShepherd uses four feedback zones to guide your dog. Each zone offers different feedback in response to your dog's level and direction of movement (toward or away from Safe Zone).



Safe Zone (green area). An audible Safe Tone sounds at regular, preset intervals while your dog is in Safe Zone. When properly trained, this continuous positive reinforcement assures your dog that being in Safe Zone is good.

First Alert Zone (blue area). Variable vibration begins when your dog enters First Alert Zone, which extends about three to six feet. Vibration intensity increases twice if your dog stays in First Alert Zone. Most often, dogs stray into First Alert Zone while checking their Safe Zone perimeter or following a scent or an animal. The light vibration in First Alert Zone is designed to turn your dog's attention away from a distraction and headed back to Safe Zone. When your dog reenters Safe Zone, SkyShepherd immediately signals your dog with soothing Safe Tone.

Second Alert Zone (yellow area). Progressive low levels of e-stimulation begin when your dog enters Second Alert Zone, which extends about three to six feet, and increase in intensity twice if the dog remains in Second Alert Zone. When your dog turns back, it receives First Alert feedback as it passes through First Alert Zone. When your dog enters Safe Zone, SkyShepherd immediately signals it with soothing Safe Tone.

Out Zone (red area). Static stimulus begins immediately when your dog departs outbound from Second Alert Zone. Out Zone lies just outside of Second Alert Zone and consists of everything outside your boundary. SkyShepherd schedules a maximum of three static stimulations of the same intensity if your dog strays from the boundary. When your dog turns back and reenters Safe Zone, SkyShepherd immediately signals your dog with a soothing Safe Tone.

NOTE. In Out Zone, three static stimulations of equal intensity are given when the dog initially departs the boundary perimeter. If Shepherding is not turned on, no further feedback will be given until the dog returns to Safe Zone, where it will hear Safe Tone. Once the dog has reentered Safe Zone, zone-appropriate SkyShepherd feedback will resume if the dog leaves Safe Zone again.

Shepherding Mode. Shepherding Mode is a user-selectable option. By default, Shepherding Mode is enabled. To enable or disable Shepherding Mode, use the SkyShepherd app from the collar's Device Settings page in the Pet Panel. When enabled, this proprietary feature uses vibration, low e-stimulation, and tones to guide your dog back into Safe Zone. If your dog finds itself outside its boundary, SkyShepherd guides it back to safety, and your dog won't feel trapped outside its boundary. See the Help Center or Operating Manual for more information about Shepherding Mode and the SkyShepherd mobile app.

Positive Reinforcement and Safe Tone

Positive reinforcement is crucial to the SkyShepherd training method: it speeds and solidifies your dog's learning. SkyShepherd uses a pleasant two-note Safe Tone to reinforce good behavior. After initial conditioning, and through the inherent continual reinforcement, your dog will associate Safe Tone with safety, relief, and relaxation.

Safe Tone sounds throughout the time that your dog is in Safe Zone and when your dog returns to Safe Zone. Along with the training you've done to condition your dog, this naturally reinforces the behaviors of staying inside Safe Zone and returning to Safe Zone.

To help your dog associate Safe Tone with safety, relief, and relaxation, do three things. First, spend a lot of quality time playing with your dog in Safe Zone doing things that your dog loves the most, such as being petted or playing with its favorite toys. Second, give praise whenever Safe Tone sounds, both while playing in Safe Zone and when training your dog on the other boundary zones. Third, when guiding your dog back from the other zones in training, guide the dog all the way back to Safe Zone until it hears Safe Tone. This teaches your dog how the zones relate to each other and how to get back to safety. Once your dog learns this, the zones' feedbacks will guide your dog back to safety when you are not there to guide it. After a while, your dog will naturally gravitate toward Safe Zone because of its positive associations with Safe Tone.

NOTE. As your dog becomes more confident in Safe Zone, it will require less praise when hearing Safe Tone. After a while, too much praise could become counterproductive. Continually assess your dog's response to praise, and taper praise as you become

confident that your dog associates Safe Tone with feelings of safety, relief, and relaxation.

NOTE. Because Safe Tone is so important for positive reinforcement, confirm that you can hear Safe Tone before placing SkyShepherd on your dog. Verify that all zone feedbacks function properly and that you can hear Safe Tone when you reenter Safe Zone.

Why It Works—Technology Meets Training

SkyShepherd uses GPS to get positioning information. It does not require burying any wire and is completely self-contained. There's no need to worry about obstacles interfering with the transmission from a base station. SkyShepherd's four zones and associated feedback actively (and positively) signal your dog about its boundaries and humanely give it a chance to change its behavior. GPS location technology also gives SkyShepherd the capability to shepherd your dog back into Safe Zone if it is ever out. Because SkyShepherd uses GPS location technology, it offers the ability to rapidly create and maintain multiple boundaries.

SkyShepherd training incorporates the principles of positive reinforcement and incentive learning. Because GPS enables SkyShepherd to give immediate feedback to your dog based on its location and its actions relative to its location, it empowers your dog to be a participant in—rather than a subject of—its training. As an active participant, your dog will learn very quickly and permanently. Positive reinforcement helps speed and solidify learning. SkyShepherd's consistent and reliable feedback makes it a tool your dog will trust. This produces positive and effective results.

Training Methodology

SkyShepherd uses four types of feedback in four progressive zones to tell your dog where it is in relation to Safe Zone. It also encourages your dog to stay in Safe Zone through positive reinforcement.

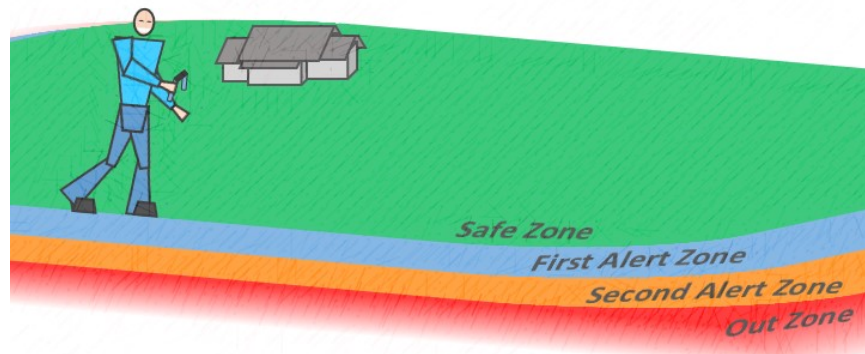
As your dog's trainer, follow these key principles to get the most out of SkyShepherd:

- **Be patient and positive.** Relax, take your time, and have fun. All dogs have an inherent desire to please their master.
- **Be trained.** Take plenty of time to understand SkyShepherd yourself before training your dog.
- **Be consistent.** Dogs are intuitive and need consistent structure to ensure they properly internalize and generalize the behavior you are trying to teach. Inconsistency breeds confusion in dogs. SkyShepherd gives consistent feedback, and so should you.
- **Be timely.** Dogs think in the moment, so make sure to guide your dog as it develops new behavior. Providing proper encouragement as Safe Tone sounds helps your dog to realize that Safe Tone is affirmation of good behavior and represents safety.

Training Phase One: Train the Trainer

Charge your SkyShepherd device overnight and ensure it is fully charged before initial use. Create your first SkyShepherd boundary in the SkyShepherd mobile app.

Go outside. After you've turned your Feedback Mode to "Standard" and activated your boundary, hold SkyShepherd by the collar strap and walk around the boundary to verify that each zone's feedback is working properly.



Walk around the boundary a few times to familiarize yourself with the boundary. (You can also use the SkyShepherd mobile app to visualize the boundary on a map.) If the perimeter isn't quite where you want it, make any adjustments now, before you start training your dog.

Move on to the next phase only when you are familiar with the boundary and are comfortable that the device reliably works for you. Be sure to repeat this phase of the training each time you set up a new boundary.

NOTE. Each zone's feedback includes a tone; the two Alert Zones and Out Zone also include a sensation. Make sure you are familiar with the tones associated with each zone. The tones will let you know what feedback the device is giving to your dog.

Training Phase Two: Train Your Dog

Every dog is different and learns at its own pace. Some dogs will need more training time than others will, which is to be expected. Assess your dog's grasp of the training throughout each training stage. Don't move on to the next stage until you're confident your dog understands what you've already been trying to teach it. Allow plenty of time to train your dog, and don't rush. You don't want to overwhelm your dog.

Rule of Threes

Use the Rule of Threes when training in the Safe Zone and First Alert stages. At these stages, hold at least three short training sessions. In each training session, cover one zone's feedback in at least three different places along the boundary perimeter (read on for more detail). Ideally, each stage should take place in one day (with morning, noon, afternoon sessions, for instance).

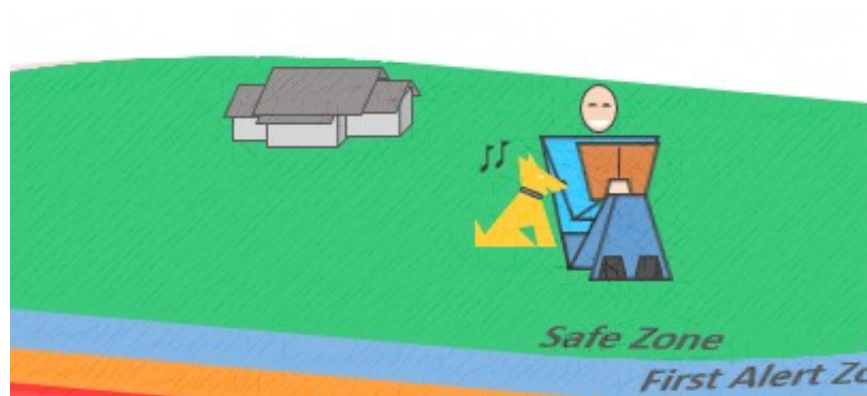
If you don't have time for three training sessions in a day, simply repeat that stage of training until you are confident your dog understands before moving on to the next stage. Try not to go too long between sessions or stages.

Foundation Stage: Orientation to Safe Zone

The focus of the foundation stage is to teach your dog to associate Safe Tone with the comfort and safety of being in Safe Zone. Allow time for at least three 15- to 20-minute training sessions in this stage.

Make sure your Feedback Mode setting is "Positive Only" before putting the SkyShepherd collar strap on your dog. Make sure to follow the instructions in the Operating Manual for fitting the collar onto your dog.

During these orientation sessions, leash your dog and spend time with it in Safe Zone. Each time Safe Tone sounds, pet or praise your dog. You can let your dog roam around the boundary but keep it away from the Alert Zones.

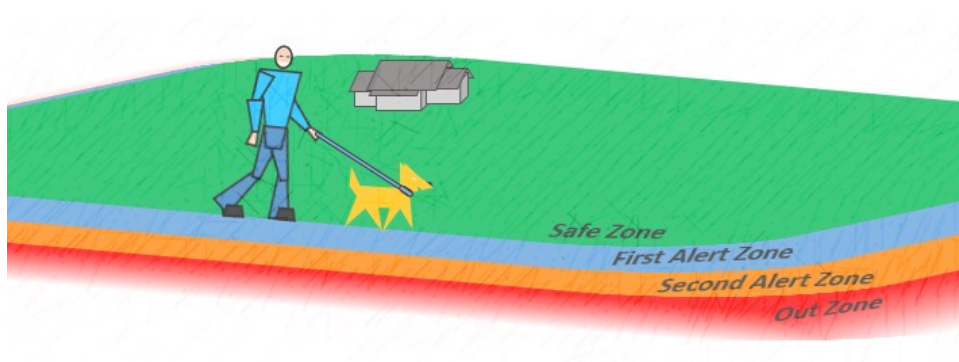


Stage One: Introduce First Alert Zone

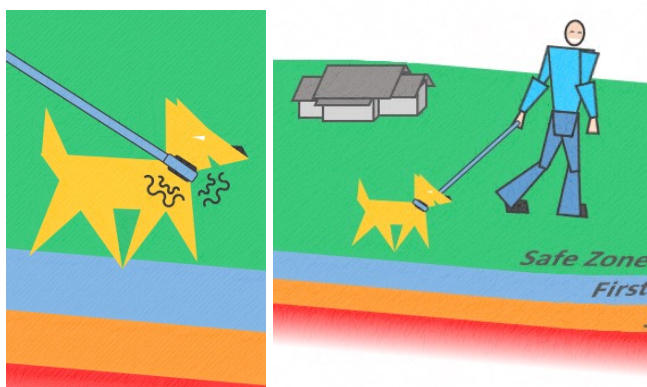
Ideally, this stage consists of three 15- to 20-minute training sessions with time spent relaxing with your dog in Safe Zone within each session. Connect your dog to a regular leash to have positive control.

While in Safe Zone, make sure your Feedback Mode setting is set to "Alert 1," activate your boundary and put SkyShepherd on your dog. It's important to make sure your Feedback Mode setting matches the Stage that you are training. Otherwise, if your dog wanders farther out than you intend and the collar Feedback Mode setting is higher than Alert 1, your dog could accidentally experience Second Alert feedback before you've introduced it.

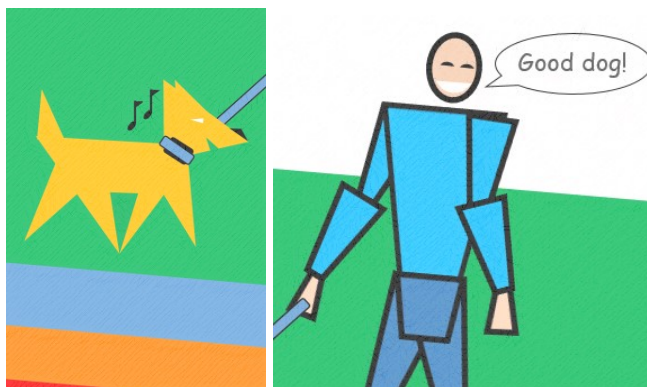
Walk your dog on leash around the boundary, maintaining gentle, steady pressure on the lead. Apply the Rule of Threes: At least three times along the perimeter of Safe Zone, allow your dog to enter First Alert Zone.



When your dog experiences First Alert Zone vibration and tone, quickly and firmly guide your dog directly back to Safe Zone.



When you hear Safe Tone, give your dog lots of praise.



Spend up to 7 minutes with your dog in Safe Zone before you let it enter First Alert Zone again. Give praise each time Safe Tone sounds.

After completing the stage, assess how well your dog understands Safe Zone and First Alert Zone. Repeat stage one training as needed until your dog consistently, immediately, and correctly responds to First Alert Zone feedback.

Stage Two: Introduce Second Alert Zone

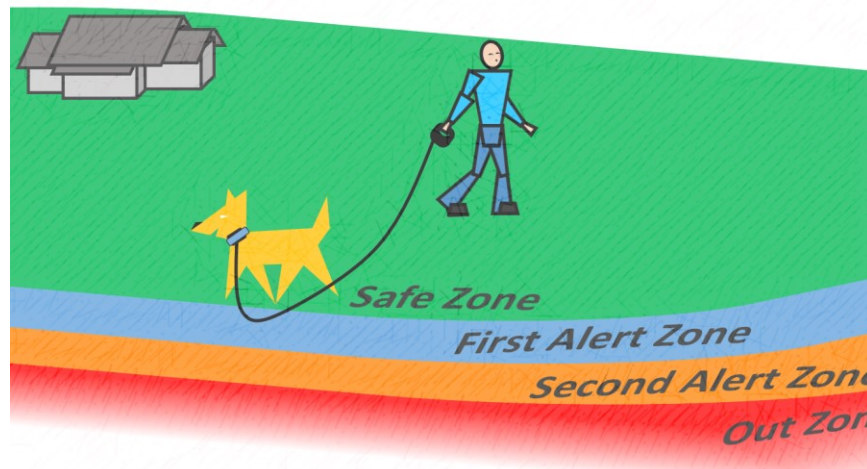
For stage two training, set your Feedback Mode to “Alert 2.” With your dog on its leash, walk with your dog toward the perimeter, and let your dog enter Second Alert Zone - Immediately guide your dog back to the Safe Zone as soon as it experiences Second Alert feedback, and don’t stop until you hear the Safe Tone.

Each time your dog experiences Second Alert Zone feedback, immediately guide it back to Safe Zone. Praise your dog when it returns to Safe Zone and hears Safe Tone. You want to continue to reinforce that Safe Zone is a comfortable, relaxing, safe place for your dog to be. Spend up to 7 minutes with your dog in Safe Zone before allowing it to experience Second Alert Zone again.

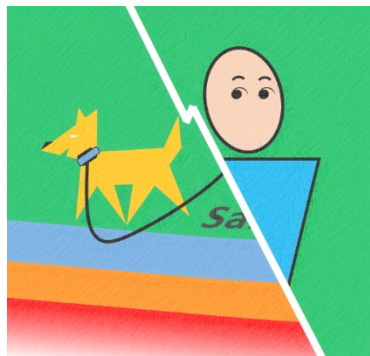
Repeat stage two as needed until you’re confident your dog understands Safe Zone, First Alert Zone, and Second Alert Zone. It should consistently respond to Second Alert Zone feedback immediately and correctly before moving on to stage three.

Test

Test whether your dog is ready for the next step of training. Make sure the Feedback Mode is set to “Alert 2.” Put your dog on a long 15+ ft leash and let your dog freely roam on the long leash. Don’t force your dog out of the Safe Zone. Observe what your dog does if it leaves the Safe Zone - If your dog immediately returns to the Safe Zone after receiving feedback, you can begin off-leash training - If it doesn’t, head back to the Safe Zone. Complete more training in the first two stages before testing again.



If your dog reacts properly when encountering alert zone feedback, turning immediately back to Safe Zone, this is a good indicator that it is ready to use SkyShepherd off leash. If your dog



hesitates, gets confused, or does anything other than immediately return to Safe Zone, guide it immediately back to Safe Zone. You'll need to do more training with your dog.

Transitioning from one stage of training to the next is not automatic. The dog must show real understanding of its training; if it doesn't, you must go back to basics. The next training stage involves off-leash training and transfers control to your dog, but your dog must be ready. Observe your dog and assess whether it understands and is ready.

Stage Three: Off-Leash Training

After your dog passes the long-leash test, hold at least three off-leash training sessions. As before, these sessions should last 15 to 20 minutes each. Make sure Feedback Mode is set to Alert 2. Watch your dog closely as it roams the boundary. When your dog experiences Alert Zone or Out Zone feedback, immediately call it back to Safe Zone and praise it when it hears Safe Tone.

Once your dog responds appropriately during off-leash training, it is ready to use SkyShepherd without you. You can advance your Feedback Mode setting to "Standard," now, if you wish. You'll still need to train your dog on each new boundary you create so it knows where the limits are for that boundary, but training for new boundaries can be shortened to just what is necessary for you to feel comfortable that your dog knows the dimensions of the new boundary.

Our Promise

We believe in SkyShepherd so strongly that we will allow you to return it for a full refund if you and your dog can't achieve positive results within 30 days. See the warranty section in the Operating Manual for more information.